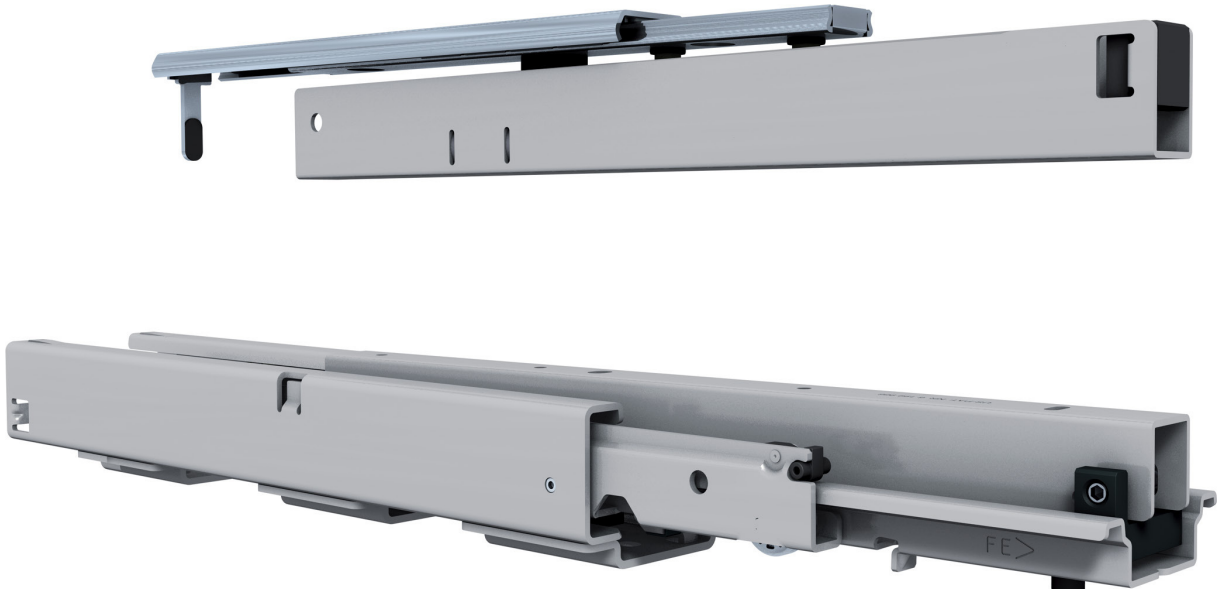


FR 775-A

SLIDE TYPE:	Progressive action full-extension pantry pull out slide with top slide
MOUNTING:	Bottom Mount

WIDTH:	min. 88,5 mm
LOAD CAPACITY::	dynamic up to 75 kg

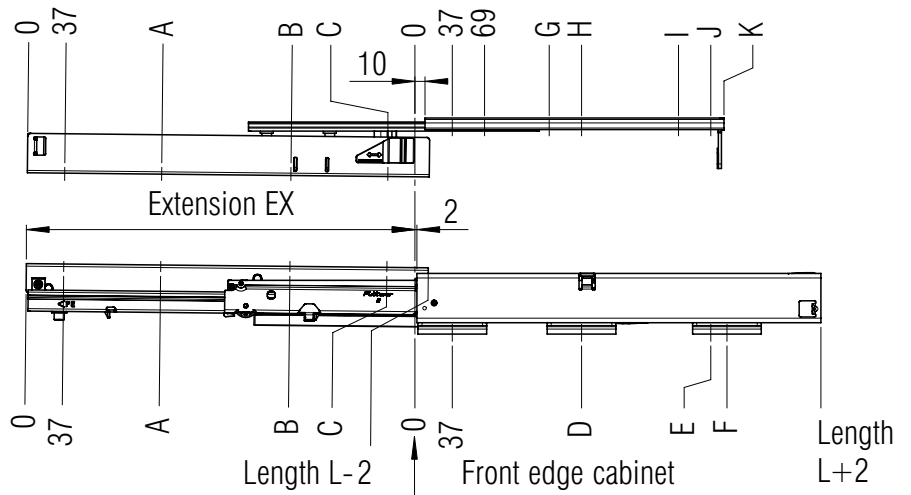
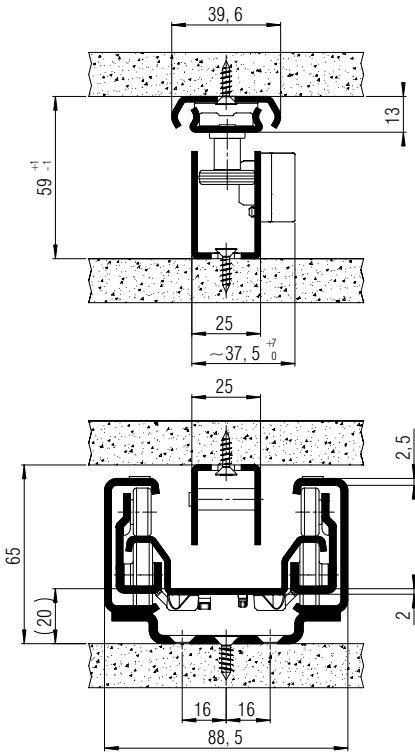


MATERIAL:	steel, powder coated
------------------	----------------------

FEATURES:	delrin*-encased steel ball bearings
------------------	-------------------------------------

SPECIFICATIONS & NOTES:
<ul style="list-style-type: none"> ▶ quick and easy installation through patented system ▶ optimum and quiet movement ▶ integrated lateral and height adjustment ▶ top slide for absolute lateral stability ▶ Easy Close Device (ECD) integrated (top and bottom slide)
<ul style="list-style-type: none"> Ⓢ Do not lubricate the slide anywhere! Ⓢ Recommended maximal cabinet height: 1500mm

*DuPont (TM) Delrin®



screw holes for 4,0 mm and 5,0 mm spax screws

L mm	EX mm	A mm	B mm	C mm	D mm	E mm	F mm	G mm	H mm	I mm	J mm	K mm	Weight per set (kg)	Order No. white
400	385	133	261	357		293		133	165	261	293	306	4,90	▶ 4201
450	435	133	261	421			357	133	165	261	293	306	5,40	▶ 4202
500	485	165	325	453			389	197	229	357	389	402	6,10	▶ 4203
550	535	197	357	517			453	197	229	357	389	402	6,60	▶ 4204
600	585	197	389	549	229		485	197	229	357	389	402	7,25	▶ 4205
650	635	229	421	613	261		549	197	229	357	389	402	7,75	▶ 4206
700	685	261	485	645	293		581	197	229	357	389	402	8,25	▶ 4207
750	735	261	485	709	325		645	197	229	357	389	402	8,75	▶ 4208

Packing Unit: 1 set per box

▶ prompt delivery