



FR 2020 ECD

SLIDE TYPE:	Regular-Extension Drawer Slide
MOUNTING:	Bottom Mount

WIDTH:	12 mm
LOAD CAPACITY:	dynamic up to 30 kg

ECD INTEGRATED
patented mechanism premounted on one side, recommended for drawer width up to 550 mm



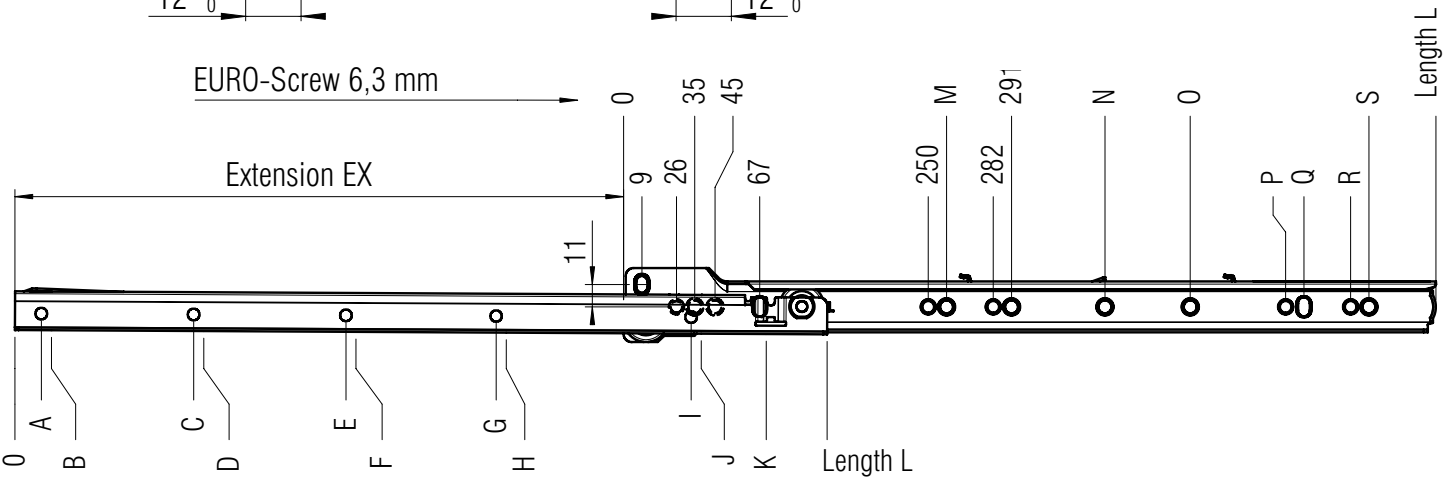
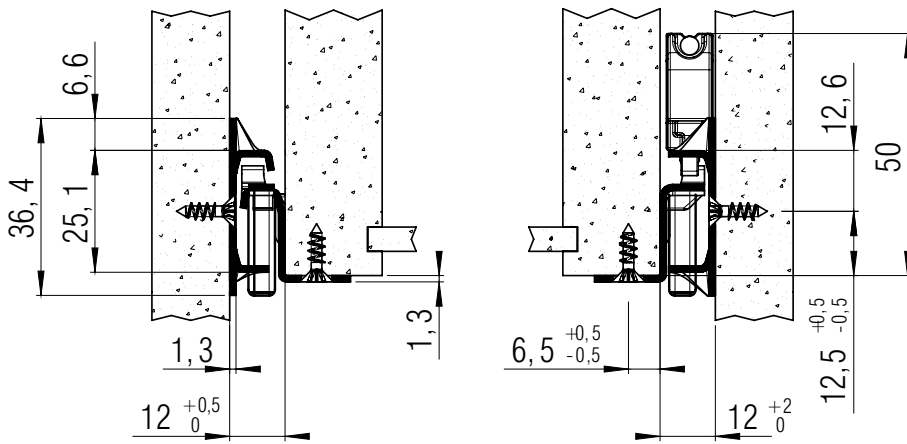
MATERIAL:	steel, white powder coated
------------------	----------------------------

FEATURES:	solid delrin* rollers
------------------	-----------------------

SPECIFICATIONS & NOTES:

- ▶ lateral stability provided by specially shaped profiles
- ▶ double hole system on cabinet profile for offset attachment to thin inside walls
- ▶ added strength of cabinet profile provided by special front flange
- ▶ oblong holes in the cabinet profile permit easy height adjustments
- ▶ dual detent in the drawer profile holds the drawer in place when extended
- ▶ single-sided captive profile (left)

① patented mechanism premounted on one side, recommended for drawer width up to 550 mm



screw holes for 3,5 mm spax screws / 6,3 mm EURO screws

L	EX	A	B	C	D	E	F	G	H	I	J	K	M	N	O	P	Q	R	S	Weight	Order No.
mm	mm	mm	mm	mm	mm	mm	mm	mm	mm	mm	mm	mm	mm	mm	mm	mm	mm	mm	mm	per pair (kg)	white
300	215	41	46					137	142	233	238	270					259			0,55	▶ 2311
350	265	27	32					187	192	283	288	320		323			259			0,64	▶ 2312
400	300	13	18					237	242	333	338	370	259	355		378	387			0,72	▶ 2313
450	350	31	36					287	292	383	388	420	259	387		410	419	442		0,80	▶ 2314
500	400	17	22			113	118	337	342	433	438	470	259	387	419	442	451	474	483	0,90	▶ 2315
550	430	35	40			163	168	387	392	483	488	520	259	483		506	515	538		0,97	▶ 2316
600	480	21	26			213	218	437	442	533	538	570	259			506	515	538	547	1,05	▶ 2317
650	530	39	44			263	268	487	492	583	588	620	259			506	515	538	547	1,14	▶ 2318
700	565	25	30	185	190	313	318	537	542	633	638	670	259			506	515	538	547	1,22	▶ 2319

Packing Unit: **10 sets per box** ▶ prompt delivery