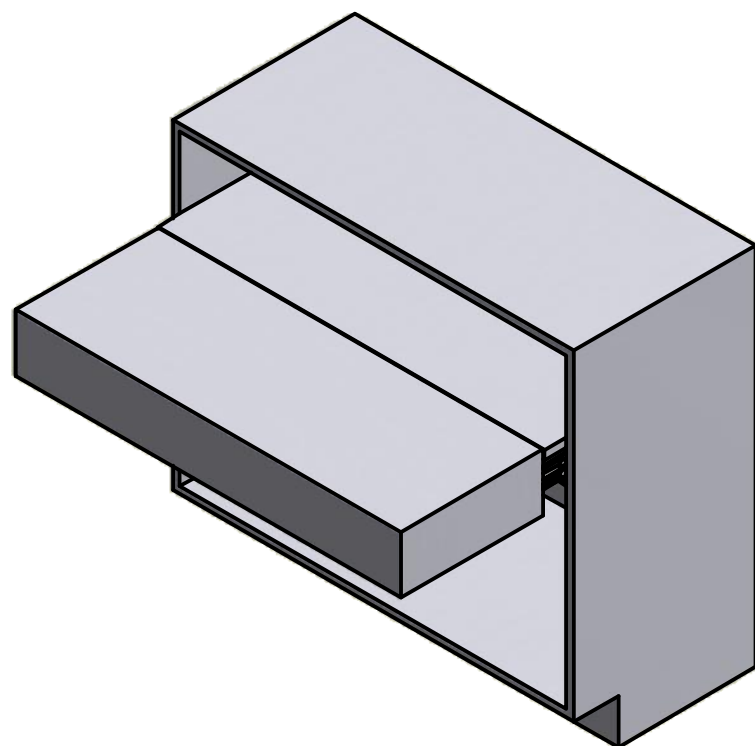


# OPLA' FOLDING +39

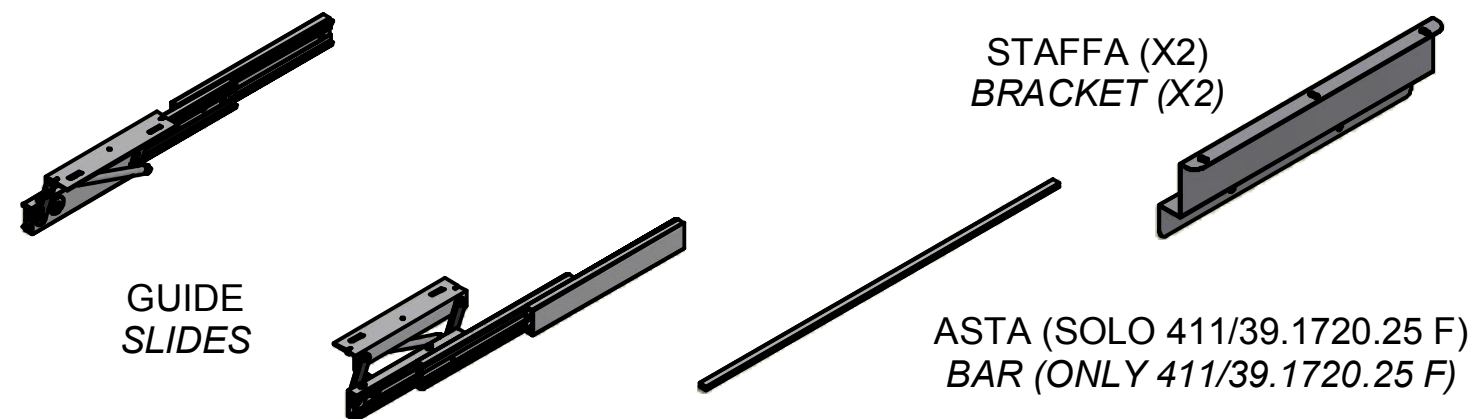
## ISTRUZIONI DI MONTAGGIO ASSEMBLY INSTRUCTIONS

MODELLI:  
MODELS:

411/39.1700.25 F Oplà +39 - Cabinet 450 / 1000 mm  
411/39.1720.25 F Oplà +39 - Cabinet 1000 / 1200 mm











## CONTENUTO DELLA CONFEZIONE INCLUDED IN THE PACKAGING




SACCHETTO ACCESSORI 1

ACCESSORIES 1

- 
- A. Chiave esa. n.5 - n.5 Allen key
- 
- B. Chiave esa. n.4 - n.4 Allen key
- 
- C. Molla - Spring (x2)
- 
- D. Ammortizzatore - Dumper (x2)
- 
- E. Bussola M6 12x8 mm - Bush M6 12x8 mm (x12)
- 
- F. Rondella Ø12x1.35 - Washer Ø12x1.35 (x10)
- 
- G. Vite TCCE M5x6 - Socked head cap screw M5x6 (x6)
- 
- H. Vite TCCE M6x12 - Socked head cap screw M6x12 (x12)

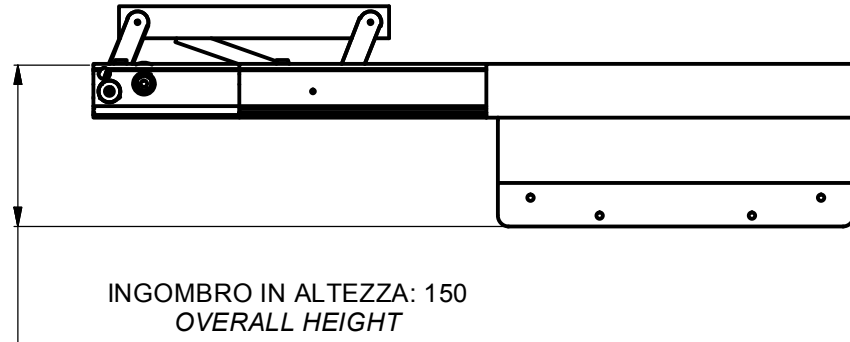
SACCHETTO ACCESSORI 2 (SOLO 411/39.1720.25 F)

ACCESSORIES 2 (ONLY 411/39.1720.25 F)

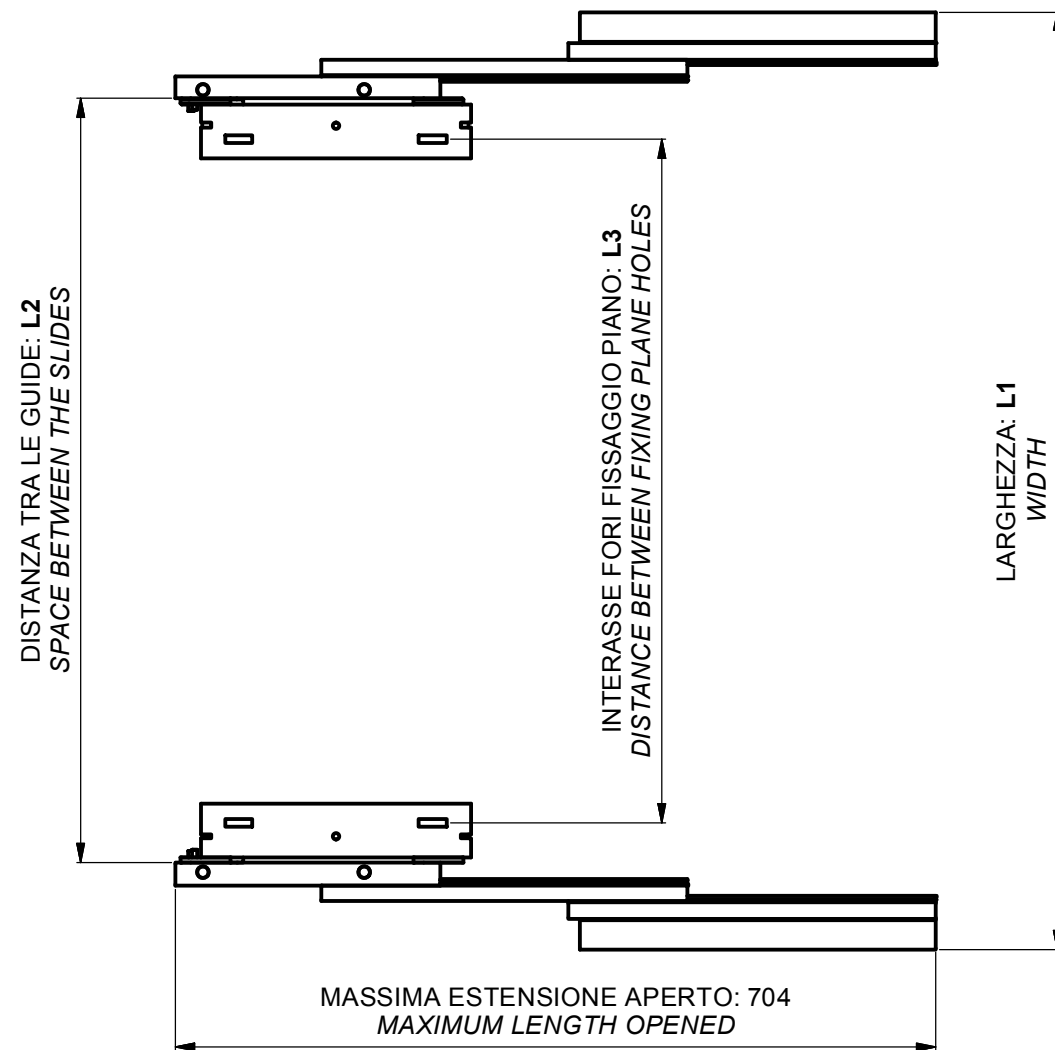
- 
1. Vite TPS M5x12 - M5x12 tapered screw (x2)

# DIMENSIONI DI MASSIMA GENERAL DIMENSIONS

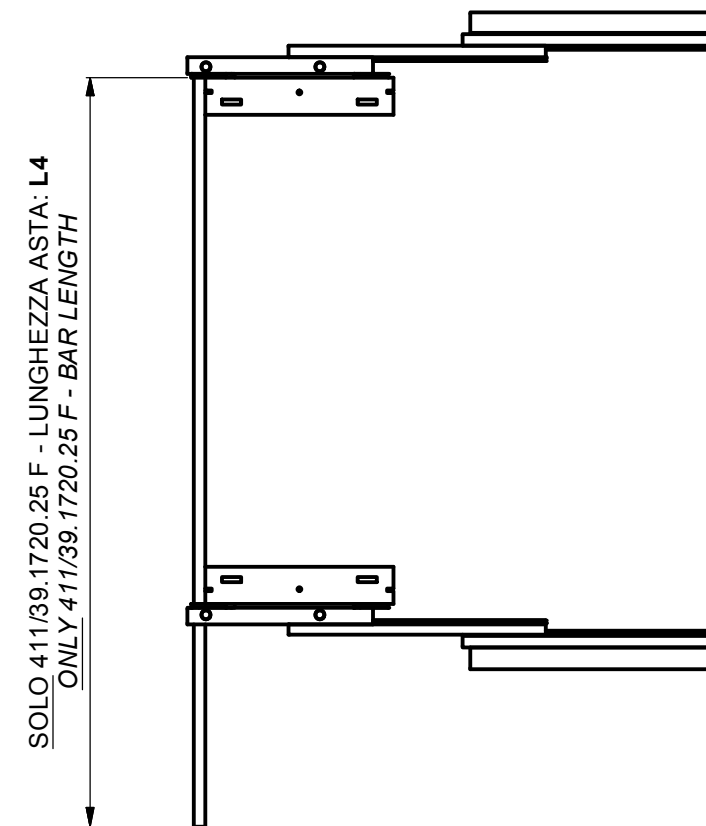
411/39.1700.25 F



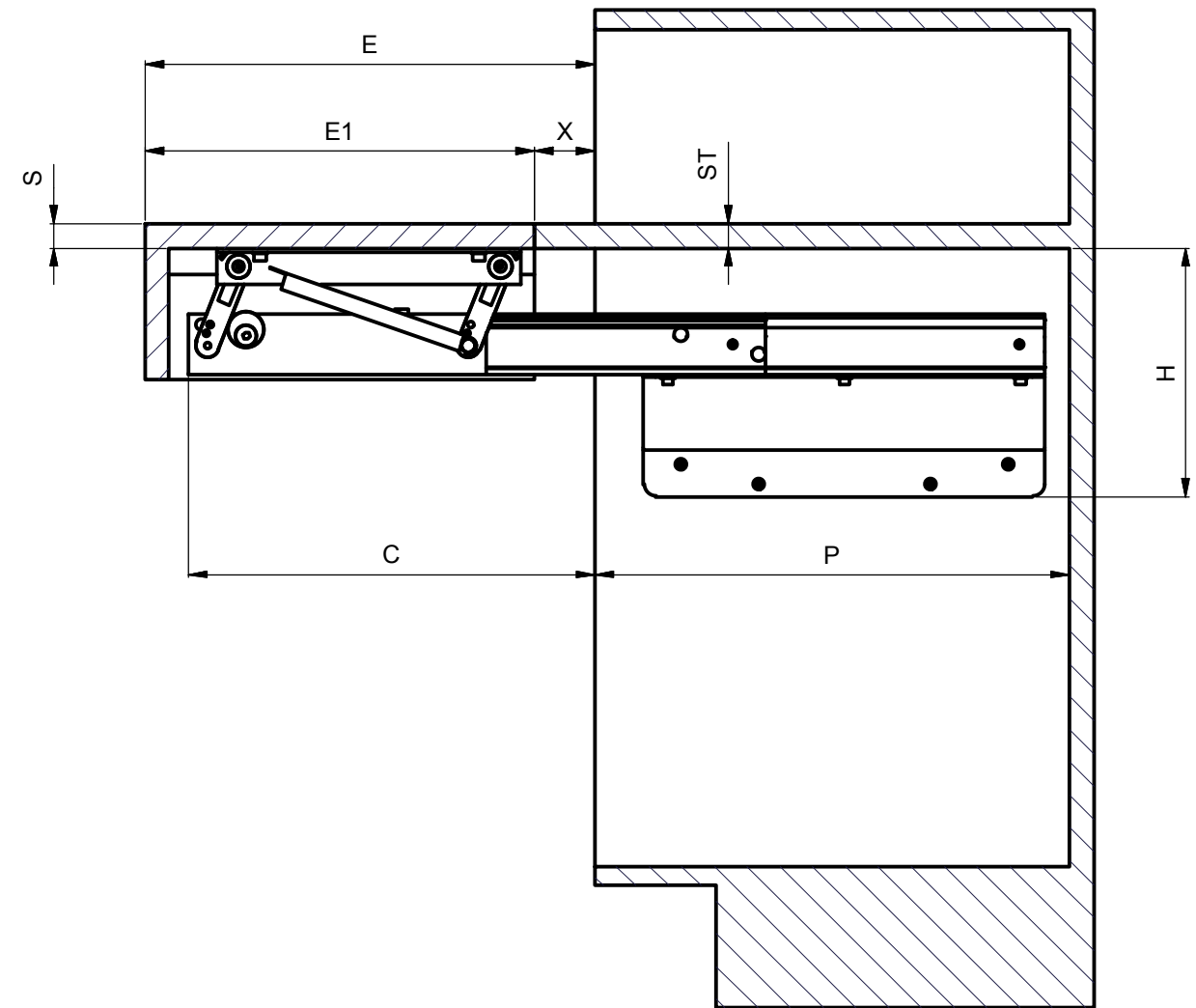
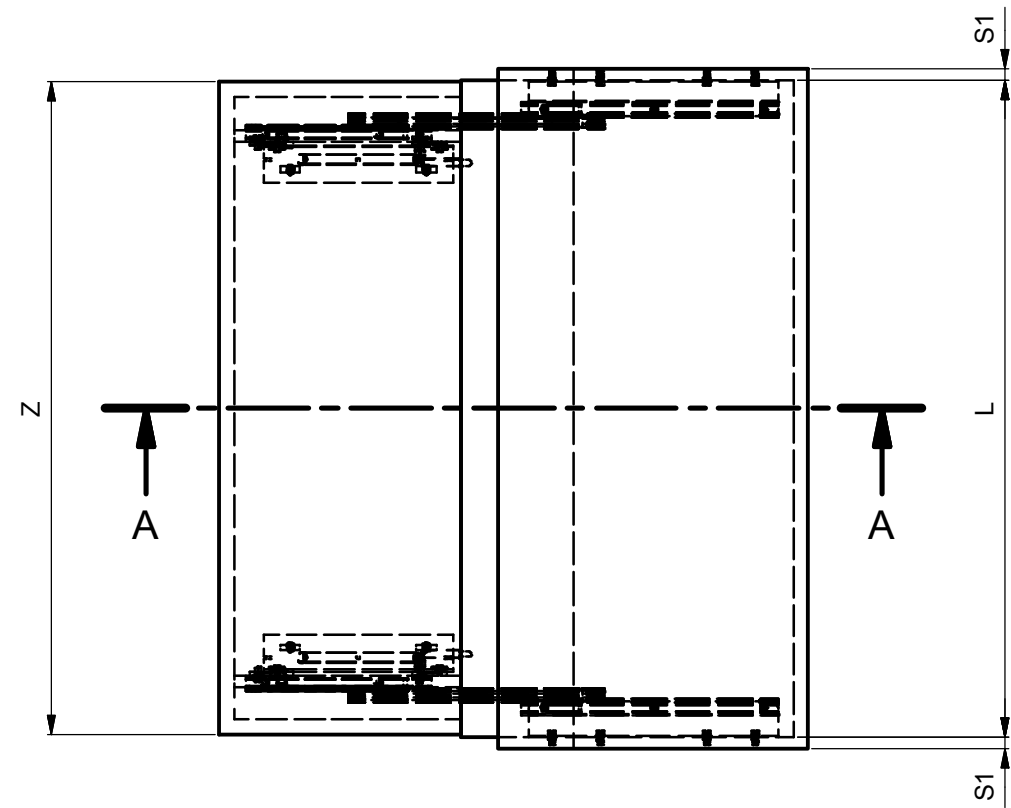
MODELLO - MODEL	MODULO - MODULE	L1 (mm)	L2 (mm)	L3 (mm)	L4 (mm) +/- 0.20 mm
411/39.1700.25	450 / 1000	410/970	L1-161	L1-235.5	L1-171.5
411/39.1720.25	1000 / 1200	960/1170	L1-161	L1-235.5	L1-171.5



411/39.1720.25 F

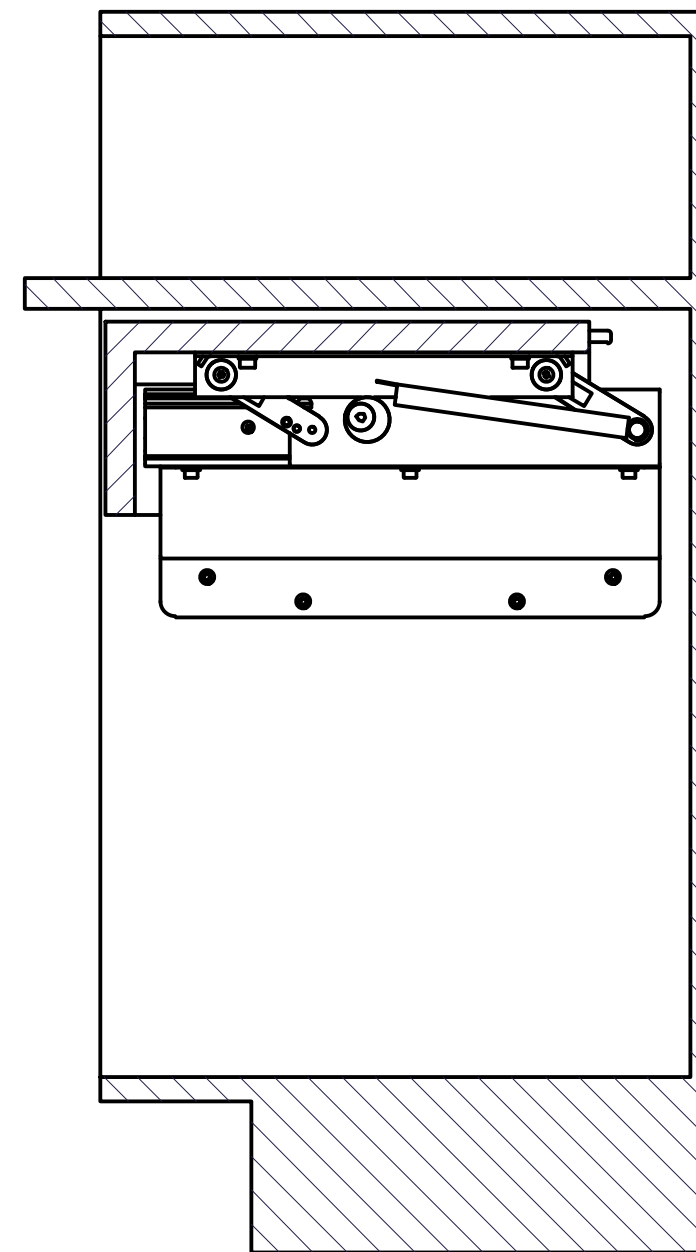
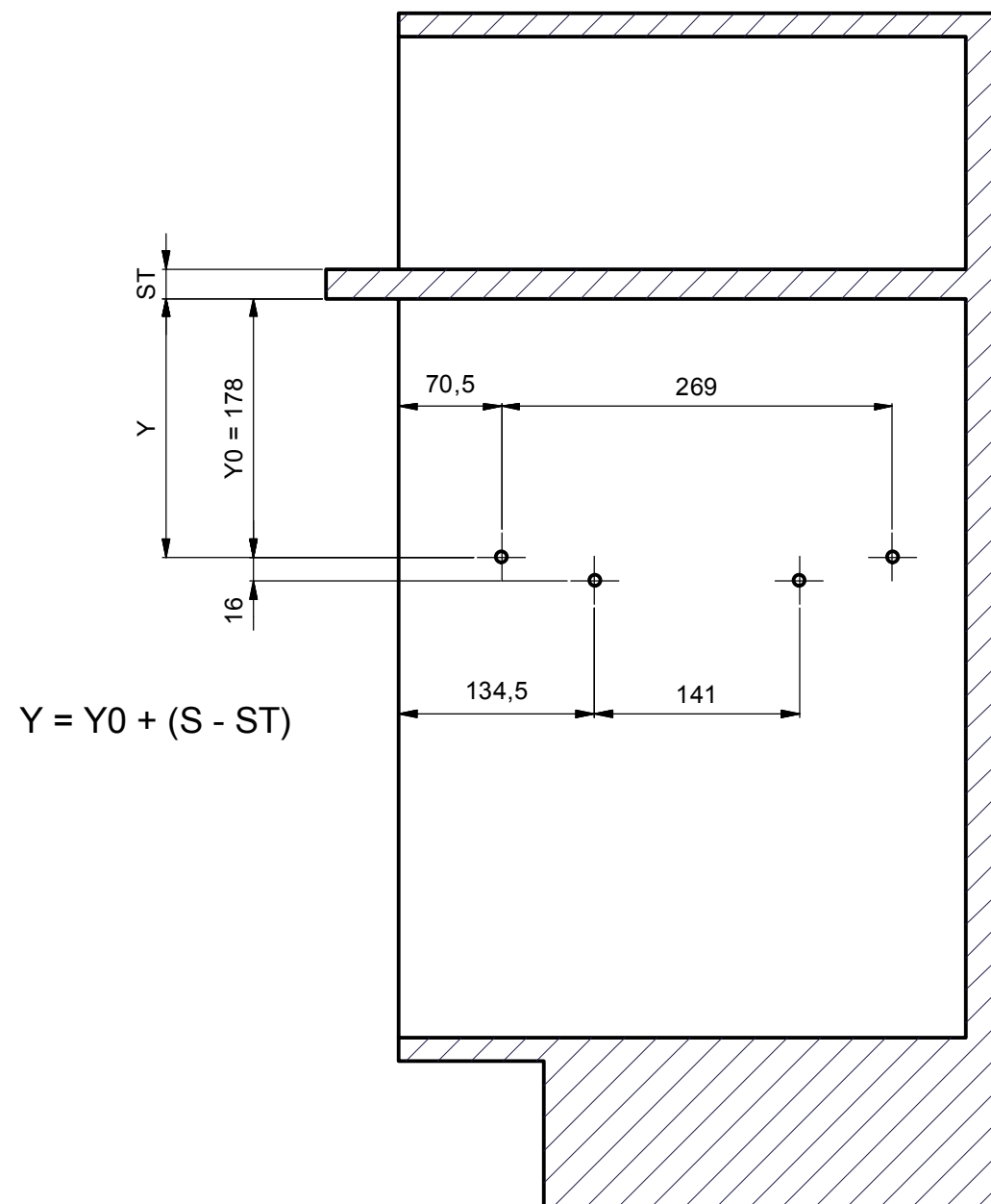


# DIMENSIONI GENERALI MOBILE GENERAL CABINET DIMENSIONS



DIMENSIONE - DIMENSION	SIMBOLO - SYMBOL	
LUCE VERTICALE - VERTICAL FREE SPACE	H	MIN: 205
PROFONDITA' INTERNA - INTERNAL FREE SPACE	P	MIN: 390 mm
LARGHEZZA INTERNA MODULO - CABINET INTERNAL WIDTH	L	MIN: 410 mm MAX: 1170 mm
SPESSORE PIANO - PLANE THICKNESS	S	16-25 mm
SPESSORE SPALLE - SIDE THICKNESS	S1	15-20 mm
SPESSORE TOP - TOP THICKNESS	ST	16-25 mm
LARGHEZZA PIANI - PLANE WIDTH	Z	L - 5 mm
SPORGENZA - PROTRUSION	X	-
APERTURA PIANI - OPENING PLANE	E	370 mm
LUNGHEZZA PIANO - LENGTH PLANE	E1	E-X
APERTURA MECCANISMO - OPENING MECHANISM	C	340 mm

# POSIZIONE FORI FISSAGGIO MECCANISMO HOLES FOR MECHANISM POSITION

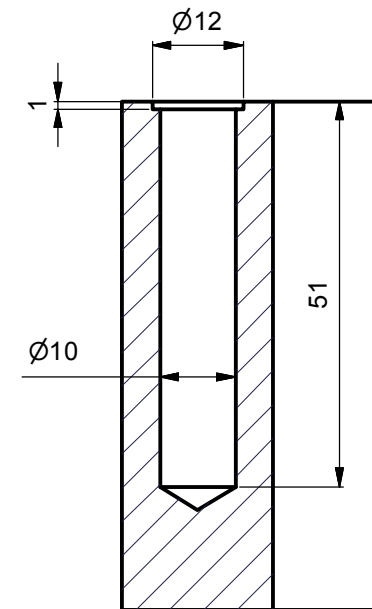
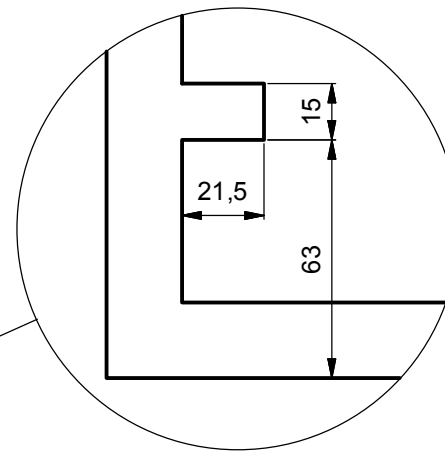
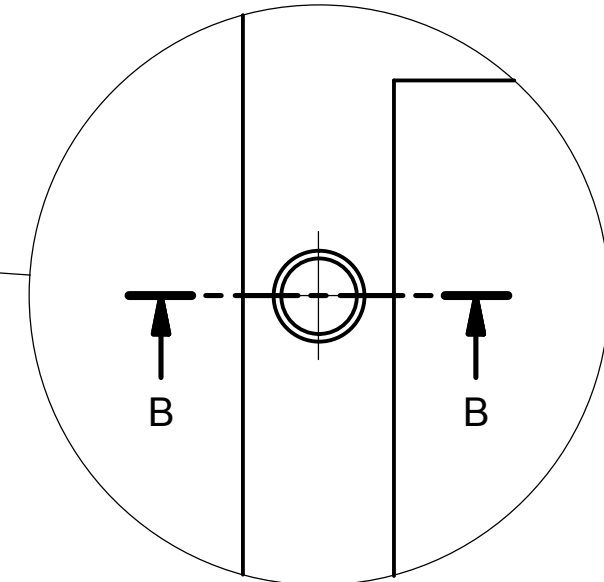
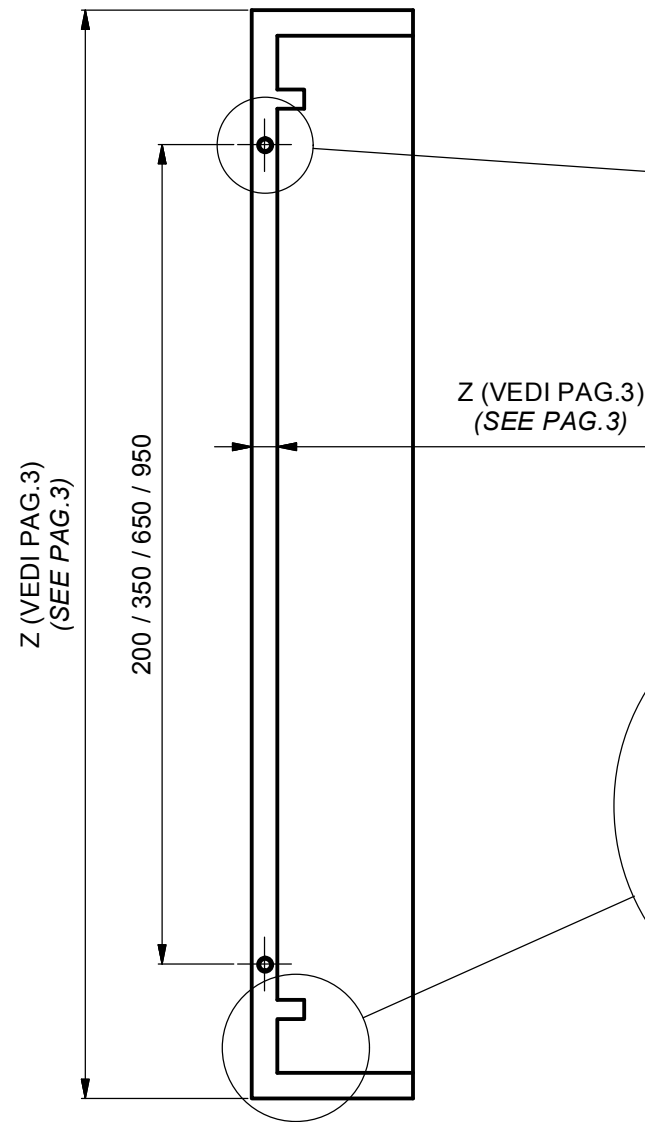
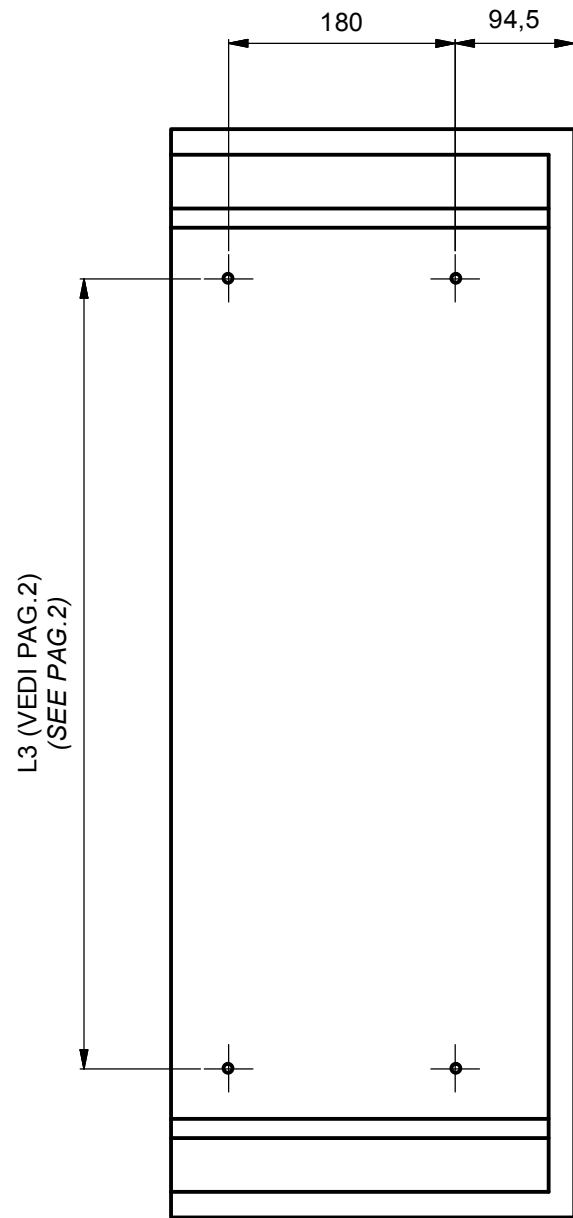


SACCHETTO ACCESSORI 1 - ACCESSORIES 1

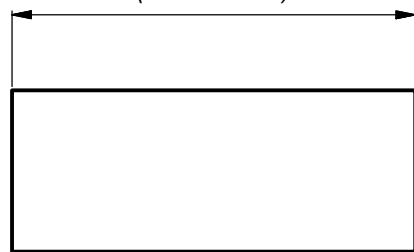


E. Bussola in ottone M6 12x8 mm - M6 12x8 mm brass bush (x 8)

# DIMENSIONE PIANO PLANE SIZE



Z (VEDI PAG.3)  
(SEE PAG.3)



## SACCHETTO ACCESSORI - ACCESSORIES



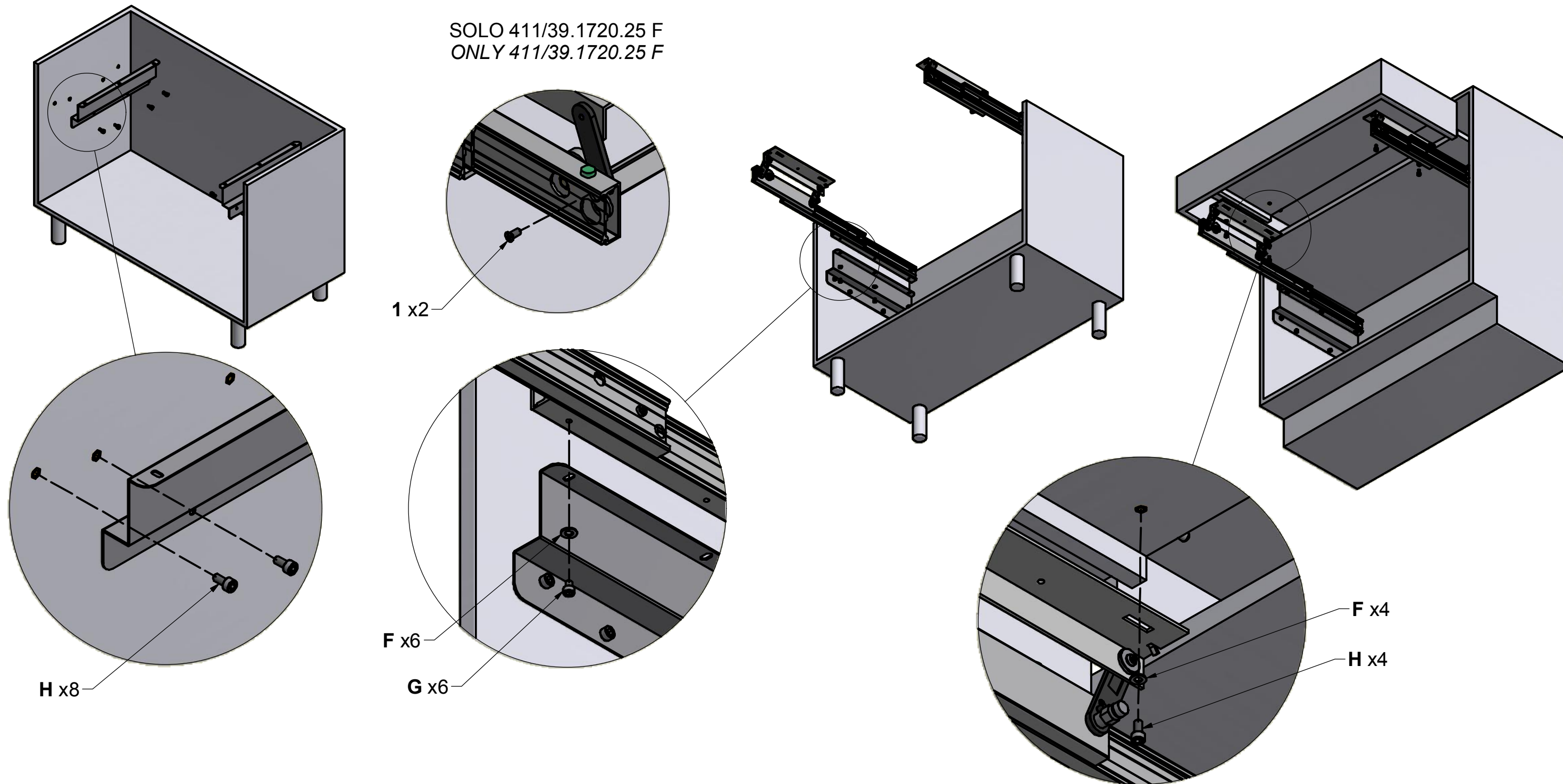
D. Ammortizzatore - *Dumper* (x2)






E. Bussola M6 12x8 mm - *Bush M6 12x8 mm* (x4)

# MONTAGGIO DEL MECCANISMO SUL MOBILE MOUNTING OF THE MECHANISM ON THE CABINET


SOLO 411/39.1720.25 F  
ONLY 411/39.1720.25 F



## SACCHETTO ACCESSORI 1 - ACCESSORIES

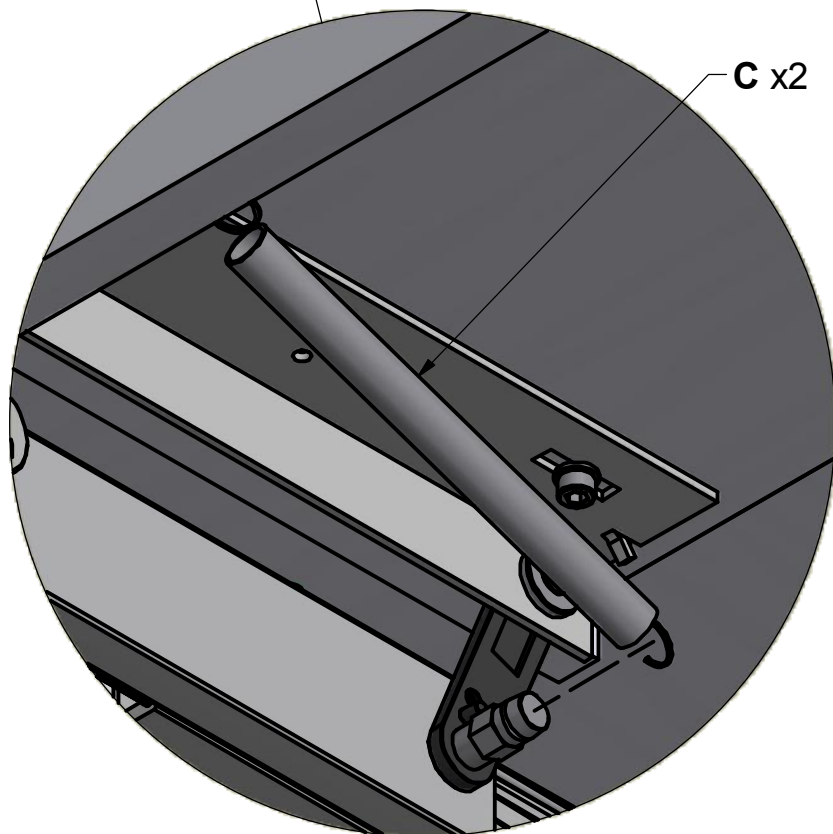
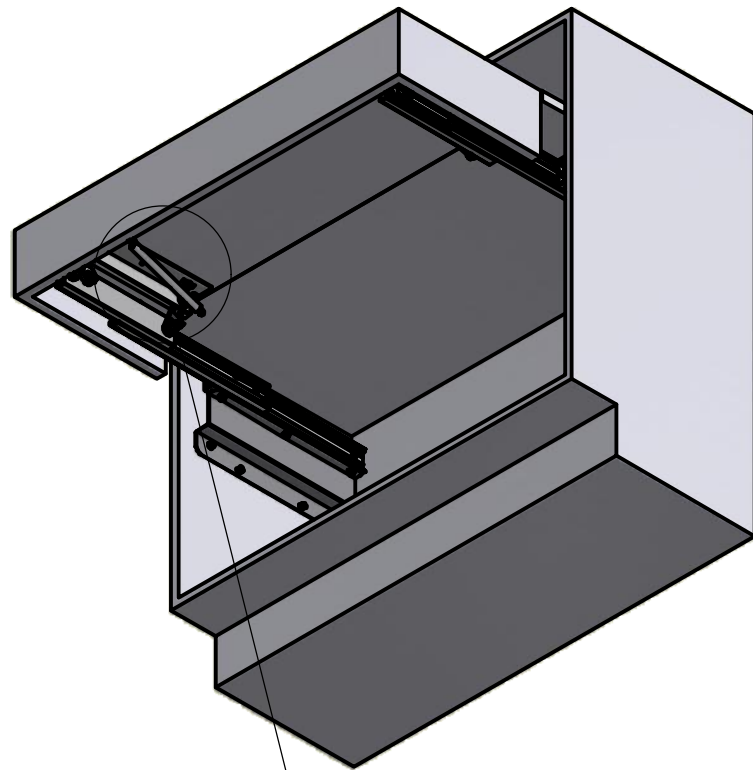
-  F. Rondella Ø12x1.35 - Washer Ø12x1.35 (x10)
-  G. Vite TCCE M5x6 - Socked head cap screw M5x6 (x6)
-  H. Vite TCCE M6x12 - Socked head cap screw M6x12 (x12)


## SACCHETTO ACCESSORI 2 (SOLO 411/39.1720.25 F) ACCESSORIES (ONLY 411/39.1720.25 F)

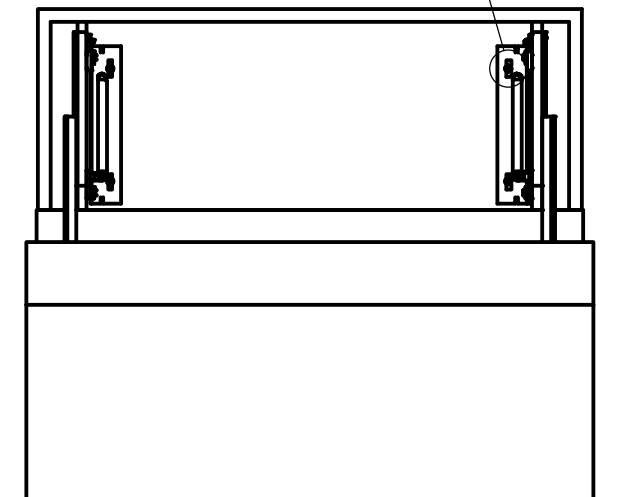
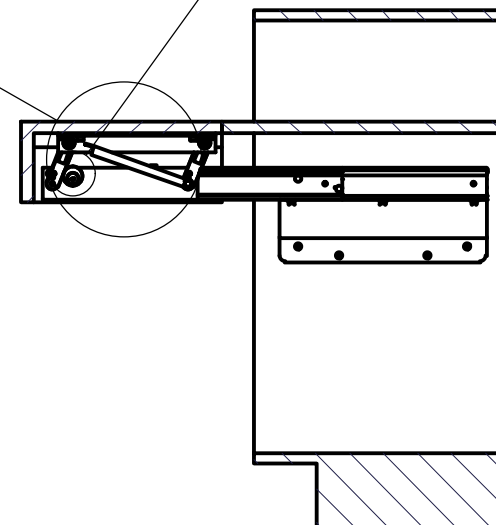
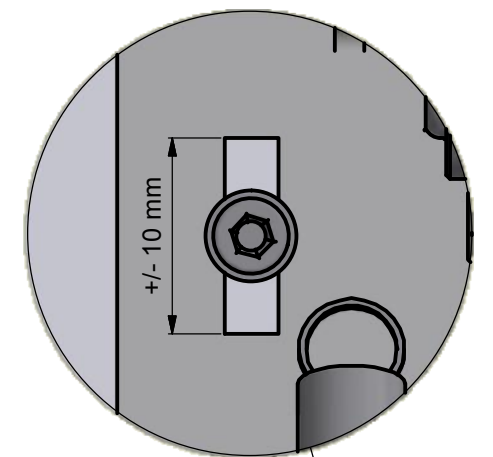
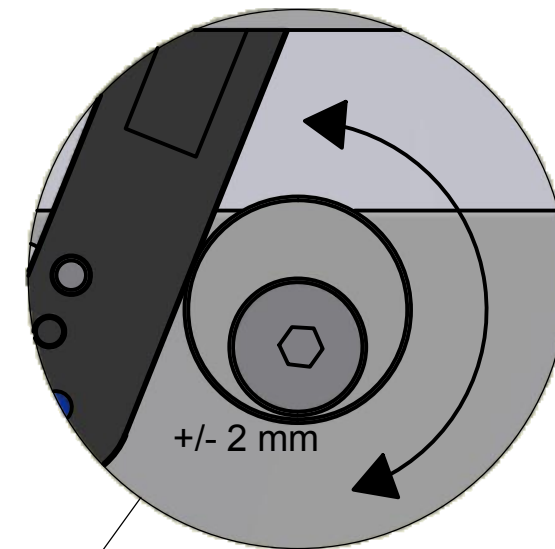
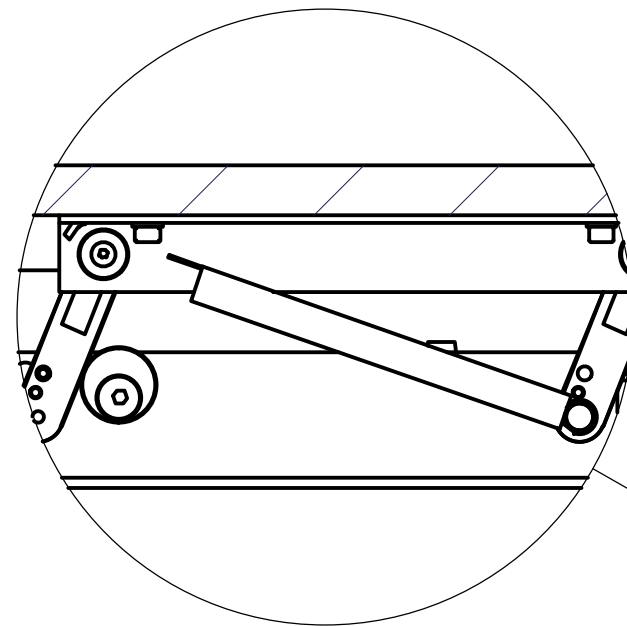
-  1. Vite TPS M5x12 - M5x12 tapered screw (x2)

# MONTAGGIO DEL MECCANISMO SUL MOBILE MOUNTING OF THE MECHANISM ON THE CABINET

SACCHETTO ACCESSORI 1 - ACCESSORIES 1



 C. Molla - Spring (x2)



TROVARE LA POSIZIONE E FISSARE IL PIANO  
CON DUE VITI TRUCIOLARI (NON FORNITE)  
FIND POSITION AND FIX THE PLANE WITH  
TWO SCREWS CHIPBOARD (NOT SUPPLIED)