

# SIMONSWERK TECTUS®

## TE 640 3D A8

for unrebated high performance heavy-duty doors with claddings up to 8 mm

### hinge

#### Technical details

load capacity	160,0 kg
overall length	240,0 mm
width (door)	32,0/37,0 mm
width (frame)	32,0/37,0 mm
cutter diameter	24,0 mm
opening angle	180° degree

#### descriptive text

SIMONSWERK TECTUS hinge TE 640 3D A8 for doors with claddings of up to 8 mm. Completely concealed for unrebated, heavy-duty doors with timber, steel and aluminium frames. UL-certified, with comfortable 3D adjustment, load capacity up to 160 kg, opening angle up to 180°, overall length 240 mm, right hand and left hand applicable, maintenance-free slide bearings, three-dimensionally adjustable: side +/- 3,0 mm, height +/- 3,0 mm, compression +/- 1,0 mm. Finish...

#### Note

The load capacity mentioned above refers to the use of 2 hinges per door leaf (1 x 2 m).

#### Product features

- completely concealed hinge system
- for timber, steel or aluminium frames
- for unrebated high performance heavy-duty doors
- maintenance-free slide bearings
- with comfortable 3D adjustment (side +/- 3,0 mm, height +/- 3,0 mm, compression +/- 1,0 mm)
- cladding up to 8 mm

#### Functional areas

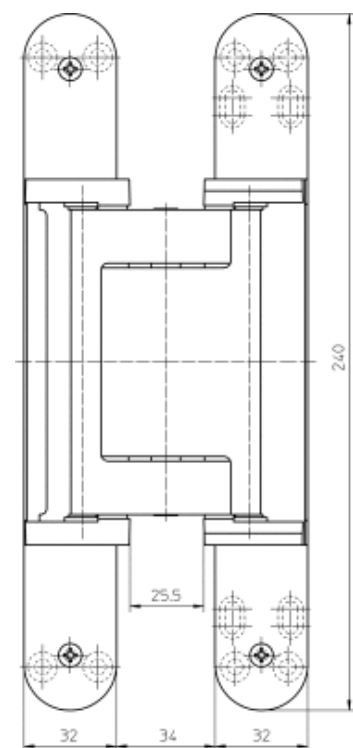
fire resistance, smoke resistance, soundproof und burglar resistance

#### Quality marks



#### Combination

accessories	cover plate set TECTUS A8 radius
receiver	TE 640 3D FZ/1 TE 640 3D A8 SZ



front view

# SIMONSWERK TECTUS®

## TE 640 3D A8

for unrebuted high performance heavy-duty doors with claddings up to 8 mm

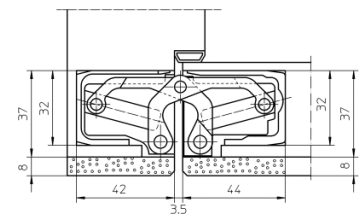
### hinge

#### installation tools

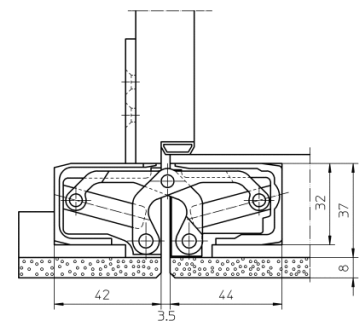
universal milling frame	
template 5 250659 5	step 1
template 5 250689 5	step 2
template 5 250690 5	step 3
template 5 251062 5	3/4" router bit / 1" collar ring (step 1)
template 5 251063 5	3/4" router bit / 1" collar ring (step 2)
template 5 251069 5	3/4" router bit / 1" collar ring (step 3)

#### Items (DIN reference: DIN right and left hand)

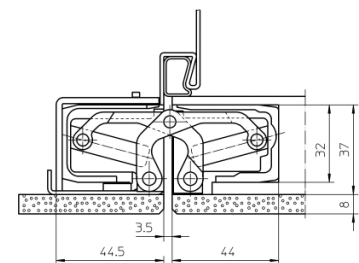
finish(es)	polished brass 030
packing unit	pack of 2
item number	5 400617 0 03002
finish(es)	polished nickelled 038
packing unit	pack of 2
item number	5 400617 0 03802
finish(es)	powder-coated 079
packing unit	EUR-pallet
item number	5 400617 0 07975
finish(es)	F1-coloured 124
packing unit	pack of 2
item number	5 400617 0 12402
finish(es)	F2-coloured 125
packing unit	pack of 2
item number	5 400617 0 12502
finish(es)	stainless steel look 126
packing unit	pack of 2
item number	5 400617 0 12602



block frame



casing frame



steel frame